

## DGC 7250 CulinArt

Combination steam oven

for steam cooking, baking and roasting with networking and TasteControl.



- Clear text display with sensor controls – DirectSensor S
- Excellent results – MonoSteam technology
- Especially light dough and nicely browned crusts – Moisture plus
- Ensures your food won't overcook – TasteControl
- Easy to clean – PerfectClean finish
- For roasting, braising and gratinating – voucher for an induction-compatible oven dish



EAN: 4002516610526 / Material number: 12101200 /  
Old Material Number: 22725042GB

General information	
Model identifier	DGC 7250 CulinArt
Manufacturer material number	12101200
EAN number	4002516610526
Marketing class	Gold
Construction type and design	
PureLine	•
Construction type and design	
Steam combination oven	•
Colour	Stainless steel/Clean Steel
Convenience features	
TasteControl	•
Rapid heat-up	•
External steam generation	•
Operating modes	
Fan plus	•
Conventional heat	•
Steam cooking	•
Moisture plus	•
Intensive bake	•
Auto roast	•
Fan grill	•
Grill	•
Grill operating modes	•
Bottom heat	•
Eco fan heat	•
Defrost	•
Automatic programmes	•
User convenience	
Networking with Miele@home	•
Display	DirectSensor S
SoftOpen	•
SoftClose	•
MultiLingua	•
Quantity-independent cooking	•
Timer functions	•
Time of day display	•
Minute minder	•
Programmable start of cooking duration	•
Programmable end of cooking duration	•
Programmable cooking duration	•
Actual temperature display	•
Target temperature display	•
Buzzer when desired temperature is reached	•
Recommended temperature	•
Individual settings	•
Efficiency and sustainability	
Energy efficiency class (A+++ – D)	A+

## DGC 7250 CulinArt

### Combination steam oven

for steam cooking, baking and roasting with networking and TasteControl.

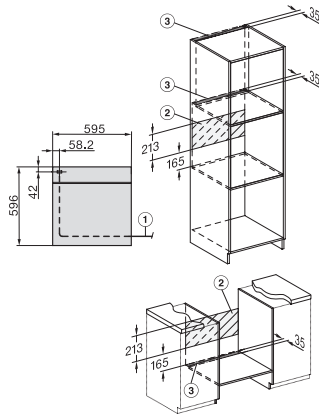


EAN: 4002516610526 / Material number: 12101200 /  
Old Material Number: 22725042GB

Automatic residual heat utilisation	•
Power rating in off mode in W	0.3
Power rating in standby mode in W	0.8
Power rating in networked standby in W	2.0
Time until automatic switch to standby in min	20
Time until automatic switch to networked standby in min	20
Time until automatic switch to off mode in min	20
<b>Cleaning and care</b>	
Stainless steel/CleanSteel finish	•
Enamelled oven compartment with PerfectClean finish and catalytic rear liner	•
External steam generator	•
Floor heater for condensate reduction	•
Maintenance programmes	•
Soak programme	•
Oven compartment drying programme	•
Removable stainless-steel side racks	•
Automatic descaling	•
CleanGlass door	•
<b>Steam techn./water supply</b>	
MonoSteam	•
Steam generator power in kW	2.20
Fresh water container volume in l	1.0
Suction tube for drawing in water	•
<b>Safety</b>	
Appliance cooling system and touch-cool front	•
Safety switch-off	•
System lock	•
Sensor lock	•
<b>Technical data</b>	
Oven compartment volume in l	76
No. of shelf levels	5
Numbered shelf levels	•
Door hinge	Bottom
Oven light	1 halogen spot
Oven temperature regulation min. in °C	30
Oven temperature regulation max. in °C	250
Oven temperatures in °C	30–250
Electronic steam oven temperature regulation min. in °C	70
Electronic steam oven temperature regulation max. in °C	100
Steam oven temperatures in °C	70–100
Niche dimensions (W x H x D) in mm	560-568 x 590-595 x 550
Niche width min. in mm	560
Niche width max. in mm	568
Niche height min. in mm	590
Niche height max. in mm	595
Niche depth in mm	550
Appliance dimensions (W x H x D) in mm	595 x 596 x 569
Weight in kg	42.0

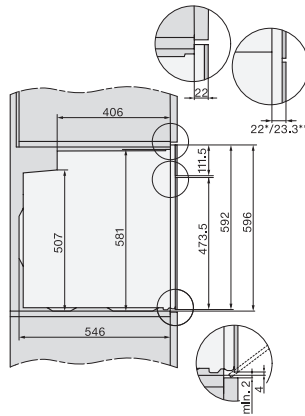


DGC 7250 CulinArt  
 Combination steam oven  
 for steam cooking, baking and roasting with networking and TasteControl.



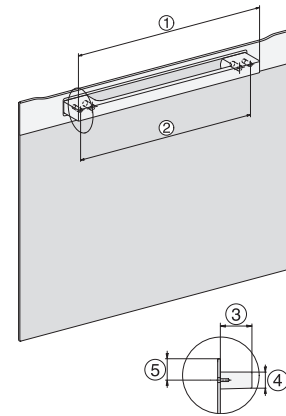
installation H7000 XL, installation drawing, GB, AU

1) Netzanschlussleitung, L=1500 mm, 2) In diesem Bereich kein Anschluss, 3) Lüftungsausschnitt min. 150 cm<sup>2</sup>



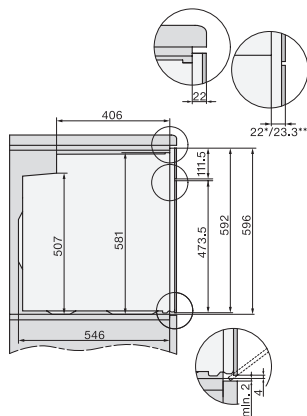
side view H7000 XL, installation drawings, GB, AU

22 mm – glass, 23.3 mm – metal



H7000 handle, installation drawing

1) 400 mm, 2) 360 mm, 3) 47 mm, 4) 24 mm, 5) 32.5 mm



side view H7000 XL build-under, installation drawing, GB, AU

22 mm – glass, 23.3 mm – metal