

DAD 4841 Black Levantar
Downdraft extractor
in an elegant obsidian black design and with intuitive SmartControl operation



- 916 mm wide – the perfect combination with panorama hobs
- Easy recirculation mode installation with plug&play accessory set
- Motorised retractable deflector plate – Hood in Motion
- Unique user convenience – Con@ctivity
- Efficient filtration- 10-ply stainless-steel grease filter



EAN: 4002516761679 / Material number: 12440700 /
Old Material Number: 28D4841MGB

General information	
Model identifier	DAD 4841 Black Levantar
Manufacturer material number	12440700
EAN number	4002516761679
Marketing class	Gold
Construction type	
Downdraft extractor	•
Construction type and design	
Colour	Obsidian black
Operating modes	
Type of air guide	Can be retrofitted
Recirculation conversion kit (order separately)	DUP 150,DUU 600
Active charcoal filter (order separately)	DKF 30-P, DKF 30-R
Design	
Edge extraction	•
User convenience	
Miele@home	•
Electronic controls	•
Con@ctivity	Yes
Touch-on-glass controls	•
Power levels (number without Booster level)	3
Run-on time 5/15 min.	•
Booster levels	2
Grease filter saturation indicator	•
Active charcoal filter saturation indicator	•
Motor-operated cooker hoods	•
Easy-to-clean canopy interior – CleanCover	•
Efficiency	
Energy efficiency class (A+++ – D)	A
ECO motor (DC motor)	•
PowerManagement system	•
Annual energy consumption in kWh/year	41.6
Fluid dynamic efficiency class	A
Lighting efficiency class	A
Grease filtering efficiency class	B
Filter system	
Number of dishwasher-safe stainless steel grease filters (10-ply)	2
Lighting	
Number x W	1 x 11,2 W
Light intensity in lx	400 lx
Colour temperature in K	3500 Kelvin
Dimmer function	•
Fan	
Dual-action blower	•
Exhaust air	
Air throughput in Level 1 (m ³ /h) according to EN 61591	200
Air throughput in Level 2 (m ³ /h) according to EN 61591	340

DAD 4841 Black Levantar Downdraft extractor

in an elegant obsidian black design and with intuitive SmartControl operation



EAN: 4002516761679 / Material number: 12440700 /
Old Material Number: 28D4841MGB

Air throughput in Level 3 (m ³ /h) according to EN 61591	440
Air throughput in Booster level 1 (m ³ /h) according to EN 61591	600
Air throughput in Booster level 2 (m ³ /h) according to EN 61591	640
Sound power in Level 1 (dB(A) re 1 pW) according to EN 60704-3	44.0
Sound power in Level 2 (dB(A) re 1 pW) according to EN 60704-3	57.0
Sound power in Level 3 (dB(A) re 1 pW) according to EN 60704-3	62.0
Sound power in Booster level 1 (dB(A) re 1 pW) acc. to EN 60704-3	70.0
Sound power in Booster level 2 (dB(A) re 1 pW) acc. to EN 60704-3	72.0
Sound pressure in Level 1 (dB(A) re 20 µPa) according to EN 60704-2-13	30.0
Sound pressure in Level 2 (dB(A) re 20 µPa) according to EN 60704-2-13	43.0
Sound pressure in Level 3 (dB(A) re 20 µPa) according to EN 60704-2-13	49.0
Sound pressure in Booster level 1 (dB(A) re 20 µPa) acc. to EN 60704-2-13	56.0
Sound pressure in Booster level 2 (dB(A) re 20 µPa) acc. to EN 60704-2-13	58.0
Recirculation	
Air throughput in Level 1 (m ³ /h) according to EN 61591	160
Air throughput in Level 2 (m ³ /h) according to EN 61591	320
Air throughput in Level 3 (m ³ /h) according to EN 61591	415
Air throughput in Booster level 1 (m ³ /h) according to EN 61591	520
Air throughput in Booster level 2 (m ³ /h) according to EN 61591	555
Sound power in Level 1 (dB(A) re 1 pW) according to EN 60704-3	50.0
Sound power in Level 2 (dB(A) re 1 pW) according to EN 60704-3	64.0
Sound power in Level 3 (dB(A) re 1 pW) according to EN 60704-3	69.0
Sound power in Booster level 1 (dB(A) re 1 pW) acc. to EN 60704-3	75.0
Sound power in Booster level 2 (dB(A) re 1 pW) acc. to EN 60704-3	76.0
Sound pressure in Level 1 (dB(A) re 20 µPa) according to EN 60704-2-13	37.0
Sound pressure in Level 2 (dB(A) re 20 µPa) according to EN 60704-2-13	50.0
Sound pressure in Level 3 (dB(A) re 20 µPa) according to EN 60704-2-13	56.0
Sound pressure in Booster level 1 (dB(A) re 20 µPa) acc. to EN 60704-2-13	61.0
Sound pressure in Booster level 2 (dB(A) re 20 µPa) acc. to EN 60704-2-13	62.0

DAD 4841 Black Levantar

Downdraft extractor

in an elegant obsidian black design and with intuitive SmartControl operation



EAN: 4002516761679 / Material number: 12440700 /
Old Material Number: 28D4841MGB

Safety

Safety switch-off	•
Single-ply safety glass (ESG)	•

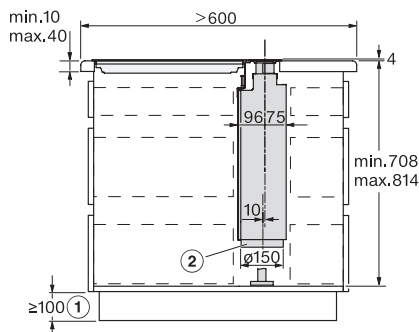
Technical data

Canopy width in mm	916
Canopy depth in mm	170
Net weight in kg	34.0
Length of supply lead in m	1.5
Standard plug fitted	•
Number of phases	1
Total rated load in kW	0.25
Voltage in V	230
Fuse rating in A	10
Frequency in Hz	50

Installation notes

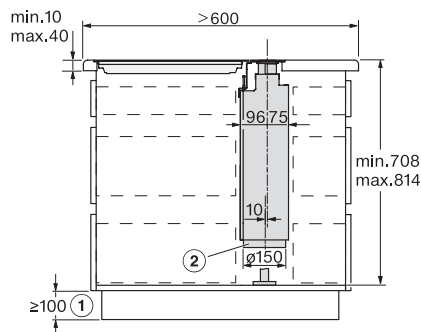
Bottom exhaust duct	•
Diameter of exhaust duct in mm	150
Optimum combination with hob subject to availability	KM 7689 FL; KM 7684 FL

DAD 4841 Black Levantar Downdraft extractor in an elegant obsidian black design and with intuitive SmartControl operation



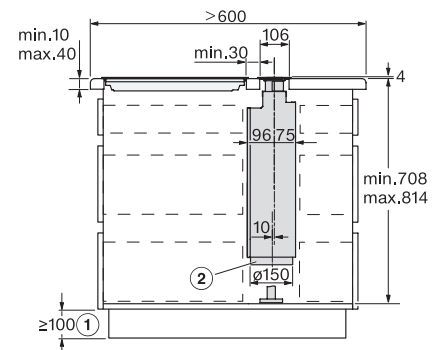
DAD4840, DAD4940, DAD4841, DAD4941 - surface mounted, AP > 600 mm – side view – Installation drawings

② Only required if flat ducts are laid under the cabinets or the DUU 600 recirculation box is used, ② Exhaust air connection \varnothing 150 millimetres.



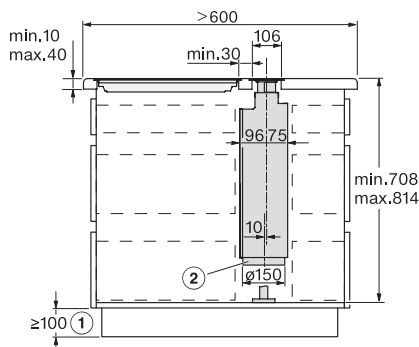
DAD4840, DAD4940, DAD4841, DAD4941 - flush – side view – Installation drawings

② Only required if flat ducts are laid under the cabinets or the DUU 600 recirculation box is used, ② Exhaust air connection \varnothing 150 millimetres.



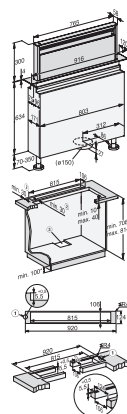
DAD4840, DAD4940, DAD4841, DAD4941 - surface mounted, AP > 600 mm – side view – Installation drawings

② Only required if flat ducts are laid under the cabinets or the DUU 600 recirculation box is used, ② Exhaust air connection \varnothing 150 millimetres.



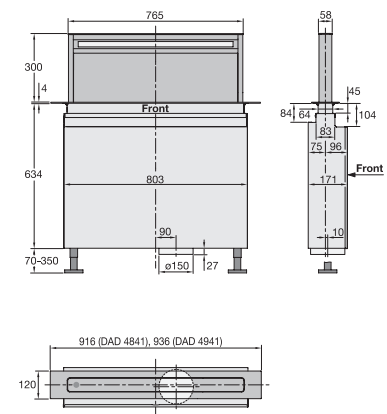
DAD4840, DAD4940, DAD4841, DAD4941 - flush – side view – Installation drawings

② Only required if flat ducts are laid under the cabinets or the DUU 600 recirculation box is used, ② Exhaust air connection \varnothing 150 millimetres.



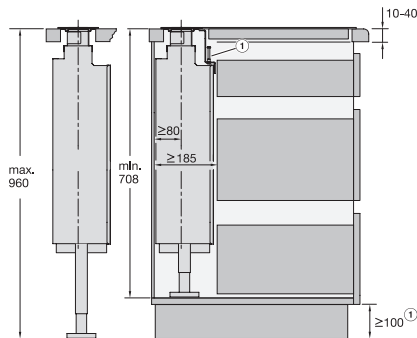
DAD4841, Installation drawings

1. Stepped cutout for flush-fit installation in stone worktops (granite, marble), 2. Ensure that materials are sufficiently stable, 3. Cut-out off-centre., Exhaust duct \varnothing 150 mm, * Only required when flat ducting is laid under cabinets or the DUU 600 recirculation box is used.



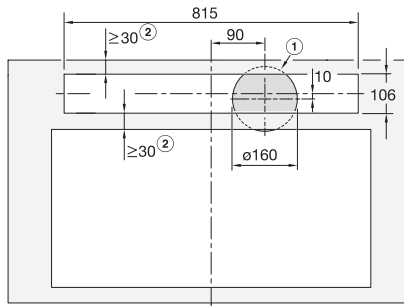
DAD4841, DAD4941, Installation drawings

DAD 4841 Black Levantar Downdraft extractor in an elegant obsidian black design and with intuitive SmartControl operation



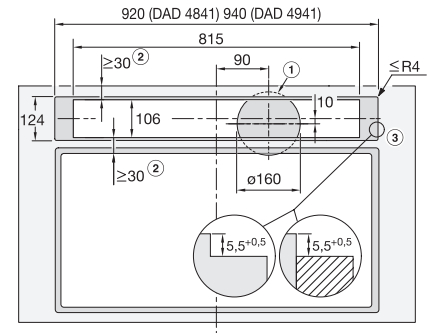
DAD4841, DAD4941, Installation drawings

2 The minimum dimension is required if flat ducts are laid under the cabinets or the DUU 600 recirculation box is used.



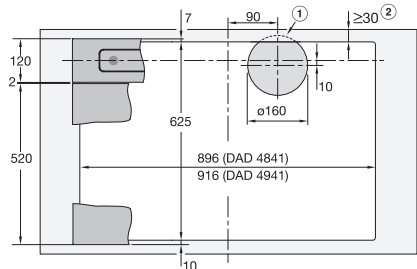
DAD4841, DAD4941, overlying, Installation drawings

Installation of the downdraft hood and cooktop in separate cutouts., Surface-mounted installation, 1) Cut-out for exhaust air line in cabinet base, 2) Ensure sufficient stability of the worktop., Exhaust air connection $\varnothing 150$ mm



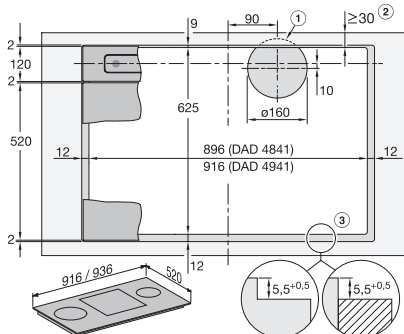
DAD4841, DAD4941, flush, Installation drawings

Installation of the downdraft hood and cooktop in separate cutouts., Flush installation., 1) Cut-out for exhaust air duct in the cabinet base, 2) Ensure sufficient stability of the worktop., 3) Step milling for flush mounting in a countertop. Note the, the different milling widths for the hob and the downdraft. Instead of a step milling, a wooden strip offset 5.5 mm downwards can be installed as an alternative (not included in the scope of delivery), , Exhaust air connection $\varnothing 150$ mm.



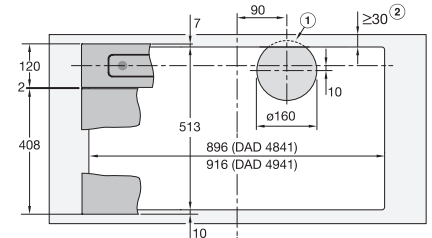
DAD4841, DAD4941, surface mounted installation, common cutout, Installation drawings

Side-by-side installation of the downdraft hood and the cooktop in a common cutout., Example: combination with KM 7697 FL or KM 7594 FL., Surface-mounted installation, 1) Cut-out for exhaust air line in cabinet base., 2) Ensure sufficient stability of the worktop., , Exhaust air connection $\varnothing 150$ mm.



DAD4841, DAD4941, flush, Installation drawings

Side-by-side installation of the downdraft hood and the cooktop in a common cutout., Example: combination with KM 7697 FL or KM 7594 FL., Flush installation, 1) Cut-out for exhaust air duct in the cabinet base., 2) Ensure sufficient stability of the worktop., 3) Step milling for flush mounting in a worktop. Note the, the different milling widths for the hob and the downdraft. , Instead of a step milling, a 5.5 mm downwardly offset wooden strip can be installed (not included in the scope of delivery), , Exhaust air connection $\varnothing 150$ mm.

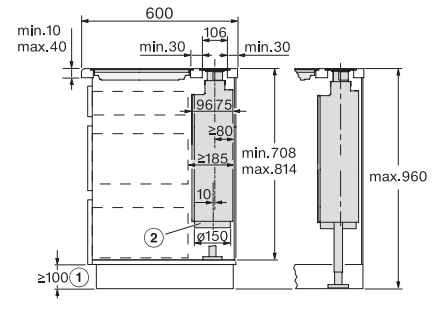
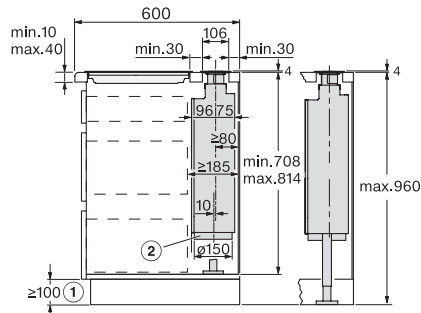
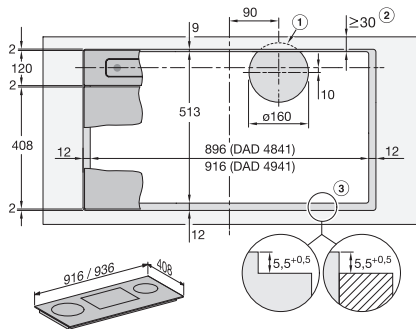


DAD4841, DAD4941, surface mounted installation, common cutout, Installation drawings

Side-by-side installation of the downdraft hood and the cooktop in a common cutout., Example: combination with KM 7684 FL or KM 7689 FL., Surface mounted installation, 1) Cut-out for exhaust air line in cabinet base., 2) Ensure sufficient stability of the worktop., , Exhaust air connection $\varnothing 150$ mm.

DAD 4841 Black Levantar Downdraft extractor

in an elegant obsidian black design and with intuitive SmartControl operation



DAD4841, DAD4941, flush, Installation drawings

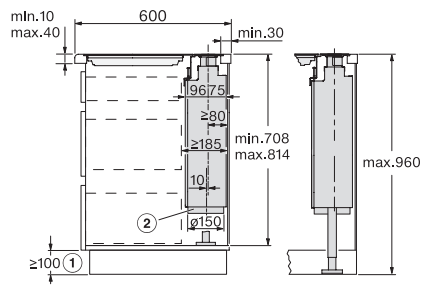
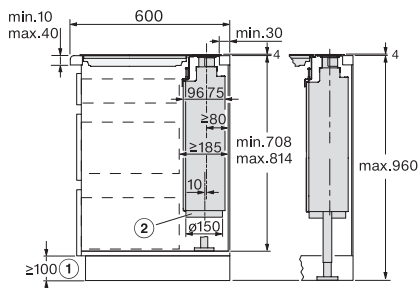
Side-by-side installation of the downdraft hood and the cooktop in a common cutout., Example: combination with KM 7697 FL or KM 7594 FL, Flush installation, 1) Cut-out for exhaust air duct in the cabinet base., 2) Ensure sufficient stability of the worktop., 3) Step milling for flush mounting in a worktop. Note the, the different milling widths for the hob and the downdraft ., Instead of a step milling, a 5.5 mm downwardly offset wooden strip can be installed (not included in the scope of delivery)., , Exhaust air connection \varnothing 150 mm.

DAD4841, DAD4941, overlying – AP600 mm, Side view, Installation drawings

1) Only required when flat ducting is laid under cabinets or the DUU 600 recirculation box is used., 2) Exhaust duct \varnothing 150 mm.

DAD4841, DAD4941, flush – AP600 mm, Side view, Installation drawings

1) Only required when flat ducting is laid under cabinets or the DUU 600 recirculation box is used., 2) Exhaust duct \varnothing 150 mm.



DAD4841, DAD4941, overlying – AP600 mm, common cutout, Installation drawings

1) Only required when flat ducting is laid under cabinets or the DUU 600 recirculation box is used., 2) Exhaust duct \varnothing 150 mm.

DAD4841, DAD4941, flush – AP600 mm, common cutout, Installation drawings

1) Only required when flat ducting is laid under cabinets or the DUU 600 recirculation box is used., 2) Exhaust duct \varnothing 150 mm.