

TEA525WP 8kg Active  
T1 heat-pump dryer:  
8 kg | EasyControl | EcoSpeed | EcoDry technology | FragranceDos



- Tested for 20 years of perfect laundry care\*
- Heat pump technology – low consumption, gentle drying
- EcoSpeed efficiently reduces the drying time by 20 minutes\*\*
- EcoDry for efficient performance over the entire tumble dryer service life\*\*\*
- FragranceDos ensures your laundry smells wonderfully fresh after drying\*\*\*\*

\* During the development phase of the W1 / W2 washing machine series, Miele tested models and core components in 5000 wash loads (= 5 wash loads per week for 50 weeks per year) in various programmes. More: [miele.com/20years](http://miele.com/20years)

\*\* Time savings calculated compared to Miele tumble dryers without EcoSpeed with the same load size and similar energy efficiency. Tested in the "Cottons" programme with a full load size.

\*\*\* Filter system patent EP 2 455 537

\*\*\*\* Patent EP 2 431 516

EAN: 4002516867807 / Material number: 12719150 / Old Material Number: 12EA5252GB

General information	
Model identifier	TEA525WP 8kg Active
Manufacturer material number	12719150
EAN number	4002516867807
Marketing class	Silver
Construction type	
Suitable for stacking	•
Door hinging	left
Side-by-side	•
Slot-in	•
Can be built-under	•
Model	
Product brand	T1 Chrome Edition
Heat pump dryer	•
Design	
Appliance colour	Lotus white
Control panel colour	Lotus white
Door design	Lotus white
Rotary selector colour	Lotus White
Control panel version	Straight
Control type	Rotary control
Display	EasyControl yellow
Drying results	
PerfectDry precision drying	•
FragranceDos fragrance system	•
Intelligent drum reversal	•
Gentle laundry care	
Honeycomb drum	•
Load in kg	8
User convenience	
Delay start up to 24 hours	•
Time left display	•
Programme sequence indicator	No
Drum lighting	LED
Condensate container	•
Integrated condensed water drainage	•
AddLoad	•
Efficiency and sustainability	
Energy efficiency class (A+++ – D)	A+++
Annual energy consumption in kWh	172
Duration in minutes in the standard programme	170
Noise in the Cottons programme with full load in db(A) re 1 pW	66
Condensation efficiency class	A
EcoDry technology	•
Maintenance-free heat exchanger	•
ProfiEco motor	•
EcoSpeed	•

TEA525WP 8kg Active

T1 heat-pump dryer:

8 kg | EasyControl | EcoSpeed | EcoDry technology | FragranceDos



EAN: 4002516867807 / Material number: 12719150 / Old Material Number: 12EA5252GB

### Drying programmes

Cottons (coloureds)	•
Cottons arrow	•
Minimum iron	•
Delicates	•
Shirts	•
Woollens handcare	•
Express	•
Denim	•
Proofing	•
Pre-Ironing	•
Bed linen	•
Warm air/DryFresh	•

### Drying extras

Anti-crease	•
Gentle tumble	•
Buzzer	•

### Quality

Soft ribs	•
-----------	---

### Safety

PIN-Code	•
Empty out container indicator	•
Clean filter indication	•
Optical interface	•

### Technical data

Dimensions (H x W x D) in mm	850 x 596 x 640
Dimensions in mm (width)	596
Dimensions in mm (height)	850
Dimensions in mm (depth)	640
Weight in kg	52
Voltage in V	220-240
Fuse rating in A	13
Frequency in Hz	50
Total rated load in kW	1.10
Length of supply lead in m	2.0
Hermetically sealed	•
Type of coolant	R290
Refrigerant quantity in kg	0.14
Refrigerant global warming potential in CO <sub>2</sub> e	3
Appliance global warming potential in CO <sub>2</sub> e	0.42
Replacing lamps	Service

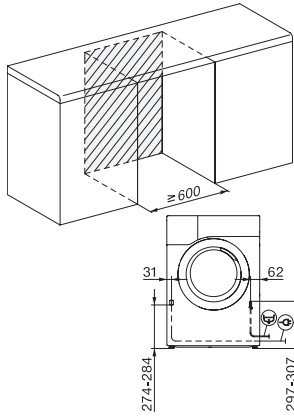
### Accessories included

Fragrance flacon	•
Voucher for a second fragrance flacon	•

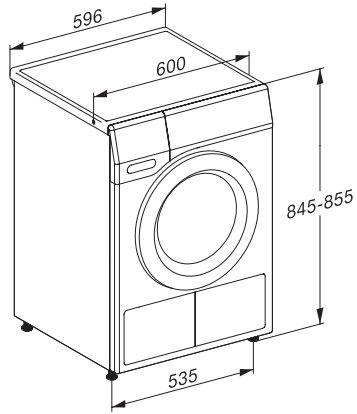
TEA525WP 8kg Active

T1 heat-pump dryer:

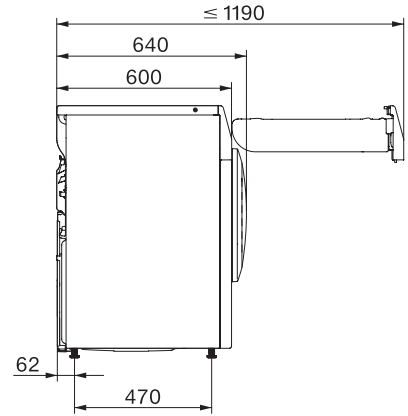
8 kg | EasyControl | EcoSpeed | EcoDry technology | FragranceDos



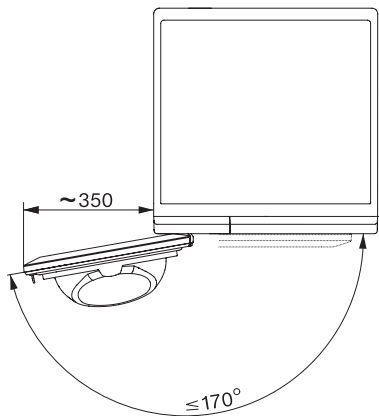
T1 installation drawing, slanted facia or straight facia, measures in mm



T1 drawing, slanted facia or straight facia, measures in mm



T1 drawing, slanted facia or straight facia, without porthole, measures in mm



T1 drawing, slanted facia or straight facia, measures in mm